

Enlivening Public Space at Night, An International Overview of Light/Art/Festivals

By Leni Schwendinger

On behalf of Americans for the Arts

NIGHTSEEING™
Navigate Your Luminous City



City Lighting ... Some History



- Security
- Aesthetics
- Festivals
- As a symbol of forward thinking

City Lighting ... Some History

“In the nineteenth century, gas lighting on many city streets became synonymous with the illicit...”

“By the 20th Century, lamps, it was argued, would deter “scenes of lewdness and debauchery which are so frequently committed with impunity at present.”

-- John A Jakle, City Lights: Illuminating the American Night

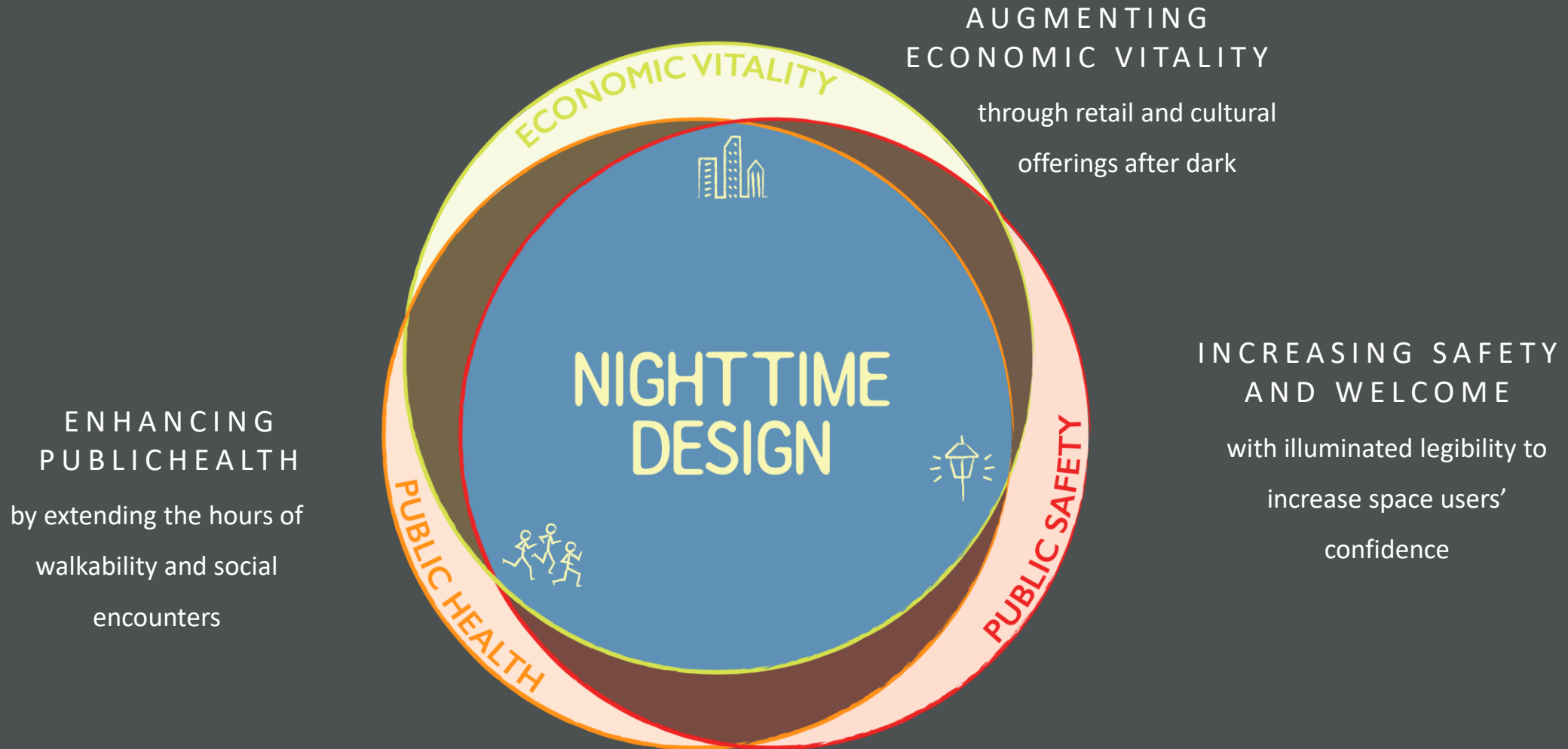
NIGHTTIME DESIGN INITIATIVE

Seeks to research and demonstrate evidence-based analysis of today's crucial after-dark issues, propose processes and products to address them, and provide examples demonstrating how such propositions actually work, are being tested, or have been executed, for tomorrow's 24/7 cities.



AN INTERDISCIPLINARY DESIGN PRACTICE BASED ON THREE PILLARS

5



Presenter point of view: Artwork



Presenter point of view: Education and pilots



LightWalk
Participants will join Leni in decoding the shadows, emanations, and reflections that define the nightscape - from shop silhouettes and signage to streetlights and the phantom photons of passing cars.



LIGHT
LENI SCHWENDINGER PROJECTS LTD

London



Enlivening public space at night

Light Festival Category Basics

- ☐ Community, grassroots
- ☐ Professional arts
- ☐ Focus on technological, media, interactive
- ☐ City identity
- ☐ Partner events / Awards
- ☐ Traditional Arts

Resource: Lighting Urban Community International (LUCI)

A city membership organization

Light Festival website

www.luciassociation.org/festivals-europe/

Also has toolkit for members

Listed:

36 Europe

5 Americas

12 Asia/Africa/Oceania

Oldest 1998 – Turin, Italy



Grassroots/engagement /educational / volunteer

❑ Community, grassroots

❑ Professional arts

❑ Focus on technological, media, interactive

❑ City identity

❑ Partner events / Awards

❑ Traditional Arts



School and neighborhood organizations



Paper and willow lantern making

Lanterns 2 Making Your Lantern

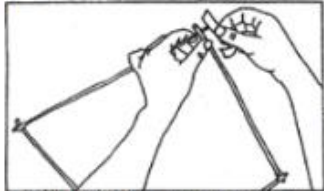
WHAT YOU WILL NEED:

1.A Withies (willow sticks) B. masking tape C. gaffer tape D. scissors E. pliers F. candles G. bottle tops H. thin wire I. strong tissue paper (N.B. it must be "wet strength" tissue paper) J. PVA glue K. piece of sponge or foam rubber

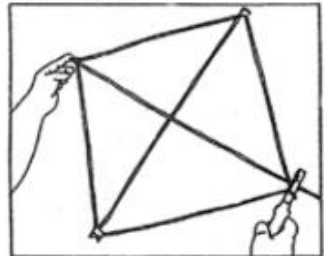
TO MAKE A SIMPLE PYRAMID:



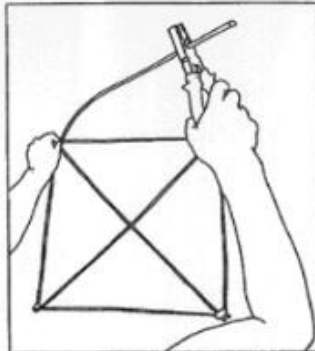
2. Cut 4 withies the same length for the base.



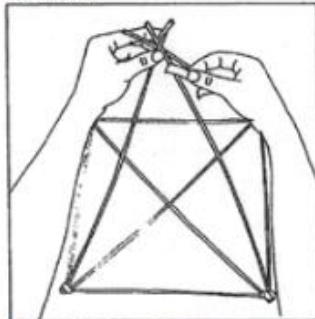
3. Join them at the corners with masking tape.



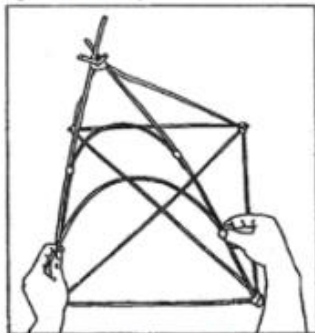
4. Add 2 diagonals.



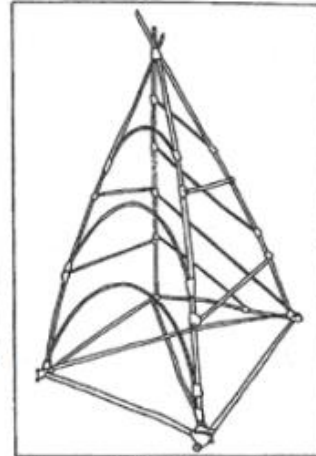
5. Measure the vertical to the height you want, cut 4.



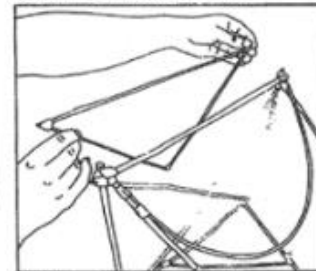
6. Join them at each corner and firmly together at the top.



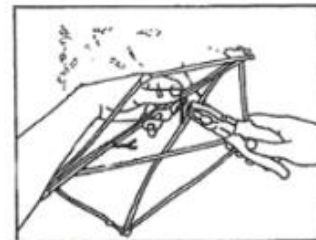
7. Decorate and strengthen the sides.



8. Use a variety of designs – remember they will show up in silhouette.



9. Make a door the same shape as one of your sections – either in the base or low down on one side.



10. Fix it on with wire hinges

Lanterns 4



21. This is a very strong sphere which you can turn into a face, an animal, a bird.....by adding features. (If necessary add diagonals near the bottom to support the candle holder). REMEMBER THERE MUST BE 12" CLEAR ABOVE THE FLAME.



22. Make a sheaf of 6 withies. Tape at the bottom and near the top.

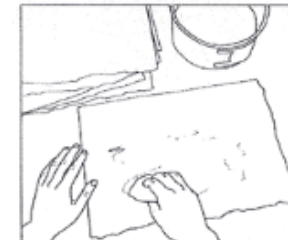


23. Add a circle and it becomes a fish. Work the thin end into a tail.

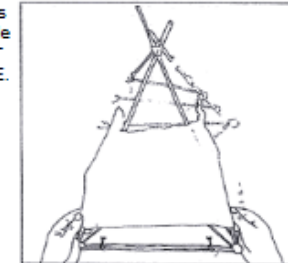


24. 4 withies and a semi-circle becomes a boat.

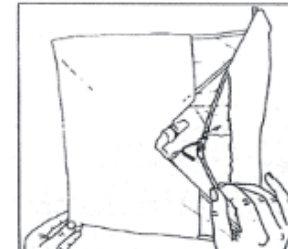
COVERING THE LANTERN



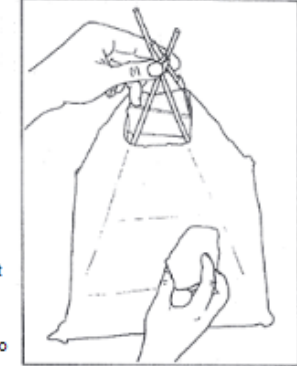
25. A washable synthetic surface is best to work on, or cover your table with plastic. Mix PVA with water until it runs off the stick. Tear the tissue paper (remember it must be "wet strength") into manageable pieces. Working on the table, spread PVA over the whole piece of paper with the sponge, or foam rubber.



26. Apply the wet tissue to the lantern, overlapping each piece as you go.



27. Cover the door separately so it still opens.



28. Cover the base and the sides LEAVING A GAP AT THE TOP (ABOVE THE FLAME) TO LET THE HEAT OUT. A final coating of PVA will strengthen the whole lantern.



29. Add a wire loop above the candle, and you will need a pole with a hook gaffer taped on for carrying your lantern.

WARNING: DON'T WEAR A SHELL SUIT OR NYLON ANORAK

Reg. Charity No. 265461
E-mail: info@Welfare-State.com www.welfare-state.org

Lanternhouse, The Ellers, Ulverston, Cumbria, LA12 0AA Phone/Fax (01229) 581127/581232
DISCLAIMER: Whilst all due care has been taken in the preparation of this information, neither Welfare State International nor its members, officers, associates or employees can be held responsible for any errors or omissions contained herein, nor for any damage or injury arising from any interpretation of its contents, however caused.

Multi-city installation to bring attention to vacant properties (U.S.)



Multi-city installation to bring attention to vacant properties (U.S.)



Community project to bring attention to displacement (Australia)



Professional

- ☐ Community, grassroots
- ☐ Professional arts
- ☐ Focus on technological, media, interactive
- ☐ City identity
- ☐ Partner events / Awards
- ☐ Traditional Arts



Portland Winter Light Festival / Of note: several partner activities

Portland, Oregon

- ❑ Community, grassroots
- ❑ Professional arts
- ❑ Focus on technological, media, interactive
- ❑ City identity
- ❑ Partner events / Awards
- ❑ Traditional Arts



Illuminated Bike Ride
Friday, February 2nd
5:30 PM
Aztec Willie's

A colorful illustration of several people riding bicycles. One person is wearing a white and blue striped shirt, another is wearing a yellow shirt, and another is wearing a pink shirt. They are riding on a path with a building in the background.

PORTLAND WINTER LIGHT FESTIVAL

BIKETOWN

GO LLOYD



POWERED BY PGE RENEWABLE ENERGY :: HOSTED BY **OMSI** :: A WILLAMETTE LIGHT BRIGADE EVENT

The logo for the Portland Winter Light Festival, featuring a rainbow cloud and the text "PORTLAND WINTER LIGHT FESTIVAL".

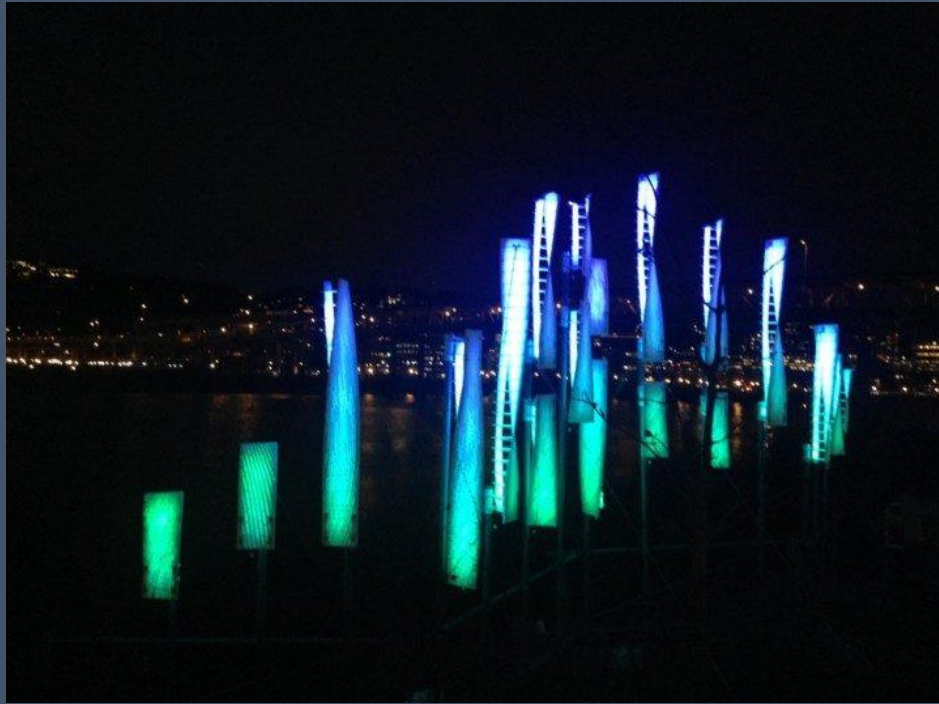
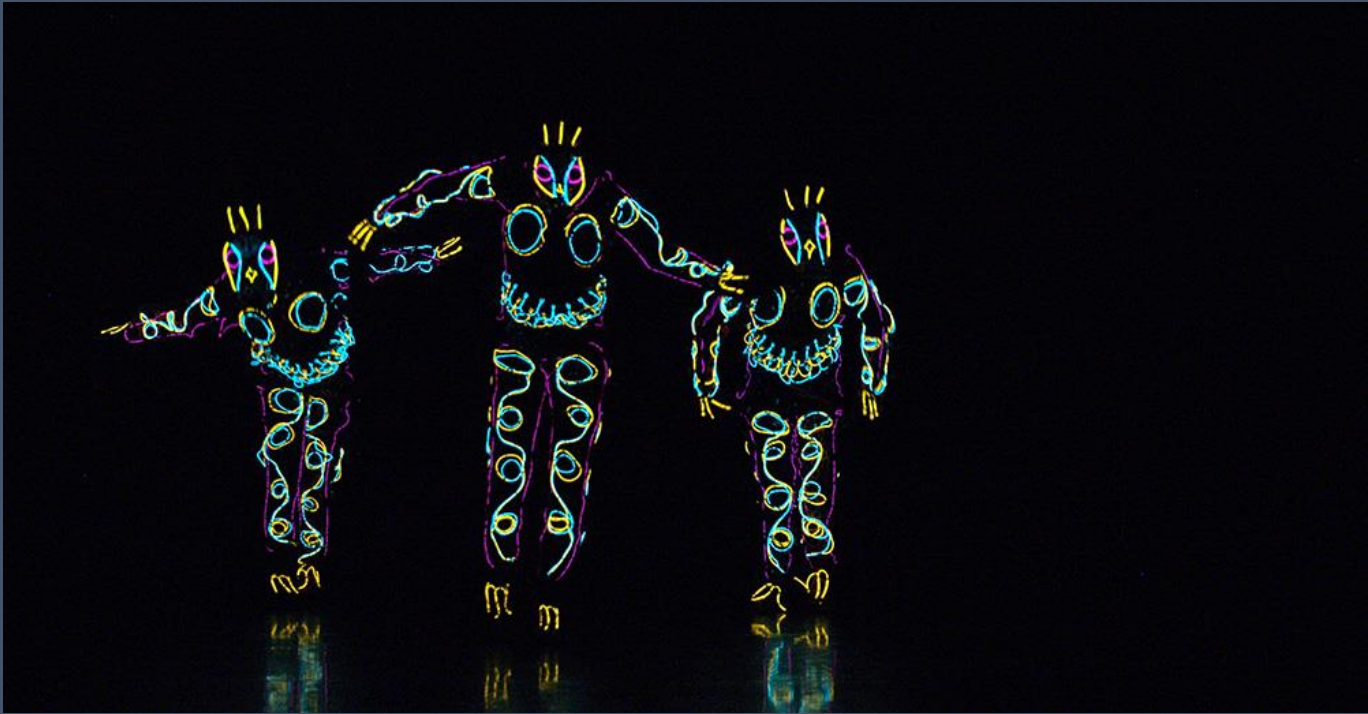
HEARTBEAT
SILENT DISCO
7-10 PM WED-SAT

The logo for Heartbeat Sound Systems, featuring a stylized "HB" inside a heart shape, with the text "heartbeat soundsystems.com" below it.

pdxwlf.com

FEB 3-6, 2016

@pdxwlf



Luci d'Artista

Turin, Italy

Of note: Pioneers: Commissioning fine artists, conserving light art and lending

- ☐ Community, grassroots

- ☒ Professional arts

- ☐ Focus on technological, media, interactive

- ☒ City identity

- ☐ Partner events / Awards

- ☒ Traditional Arts

Luci d'Artista Torino





Amsterdam, Netherlands

Of note: Festival, “lightartcollection” and “World Masters in Projection Mapping” award, 2018

☐ Community, grassroots

☒ Professional arts

☒ Focus on technological, media, interactive

☒ City identity

☒ Partner events / Awards

☐ Traditional Arts



Conserving specific sculptural pieces and offering to sister festivals (a new business model).

lightartcollection

+ collection

+ our services

+ projects

+ about

+ contact

+ faq

THE COLLECTION

Our collection consists of a great variety of
light art installations, created by artists
from different disciplines and backgrounds

filter

search

type

+ static

+ interactive

+ motion

size

+ small

+ medium

+ large



Brocken 6A

Yasuhiro Chida
Japan

Inspired by a natural light phenomenon: the mysterious Brocken spectre

l: 4,5 m w: 4,5 m h: 4,5 m

→ go to object

♥ add to my collection



A Window in Time

Motion Paintings
The Netherlands

Through the usage of LED lights and specially designed software pictures come to life in a moving painting of light.

l: 12 m w: m h: 3 m

→ go to object

♥ add to my collection



Squared Time

Hanna Betsema
The Netherlands

By seeing all of the blocks of Squared Time together and being able to walk around them, you can physically experience and comprehend how much time fits in one day.

l: m w: m h: m

→ go to object

♥ add to my collection



Lumiere Festival

Durham, United Kingdom Of note: Single curator

☐ Community, grassroots

☒ Professional arts

☐ Focus on technological, media, interactive

☒ City identity

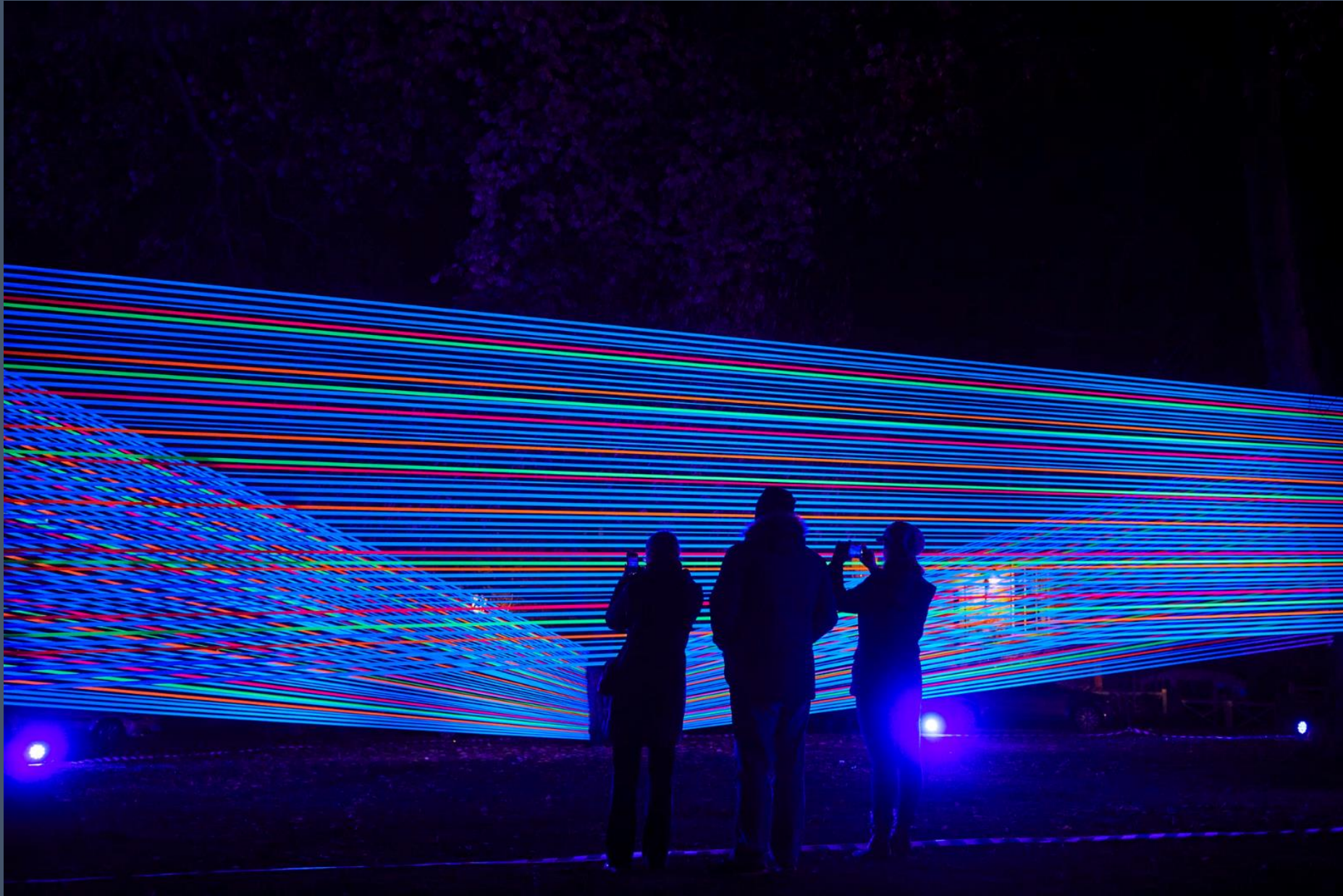
☐ Partner events / Awards

☒ Traditional Arts

Lumiere, Durham, UK



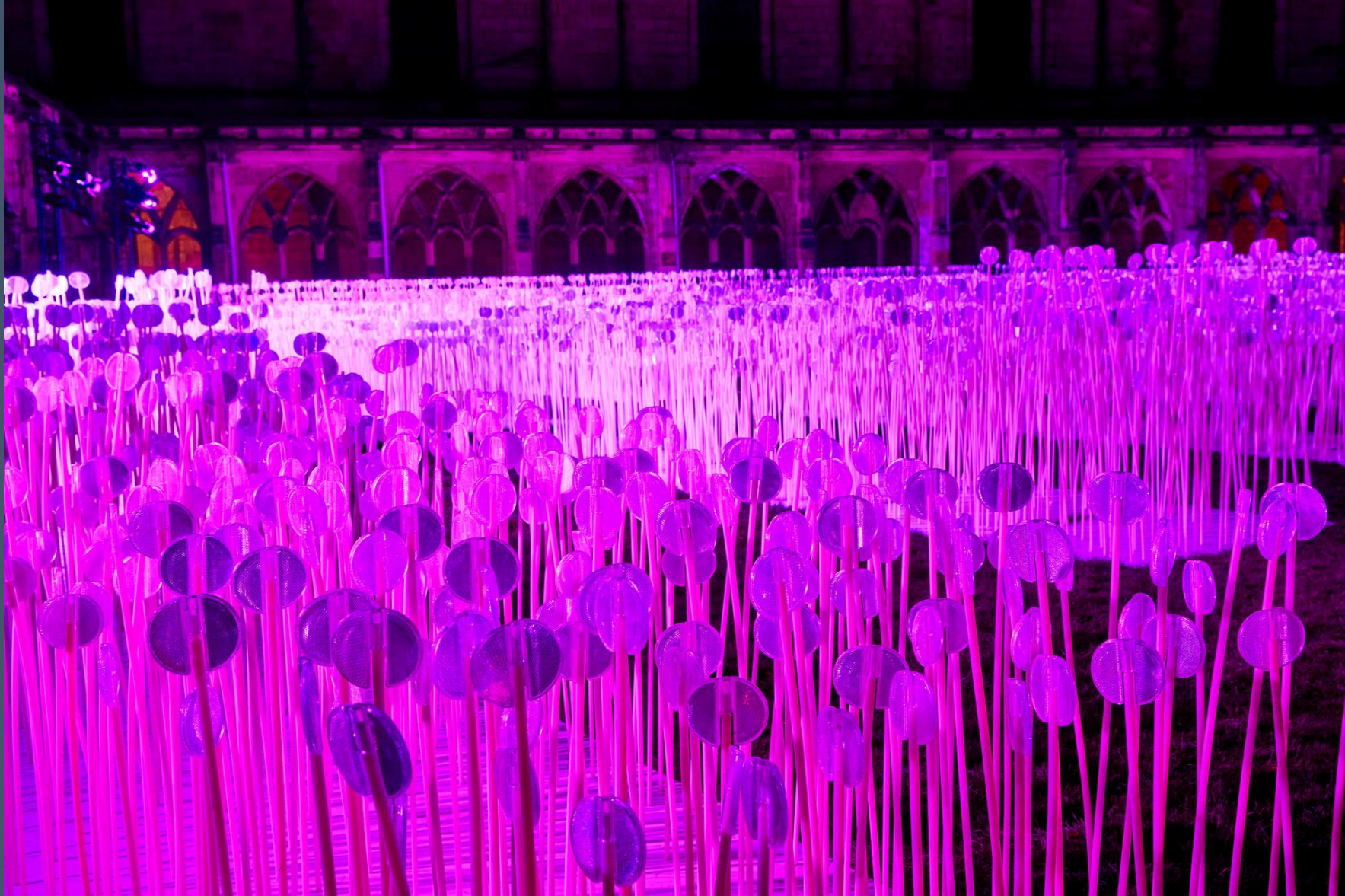
Lumiere, Durham, UK



Lumiere, Durham, UK



Lumiere, Durham, UK



Lumiere, Durham, UK



Fête des Lumières Lyon, France

Of note: The innovator of city identity, colors the streets, mix of professional and student

- ❑ Community, grassroots

- ❑ Professional arts

- ❑ Focus on technological, media, interactive

- ❑ City identity

- ❑ Partner events / Awards

- ❑ Traditional Arts

Fête des Lumières, Lyon



Fête des Lumières, Lyon



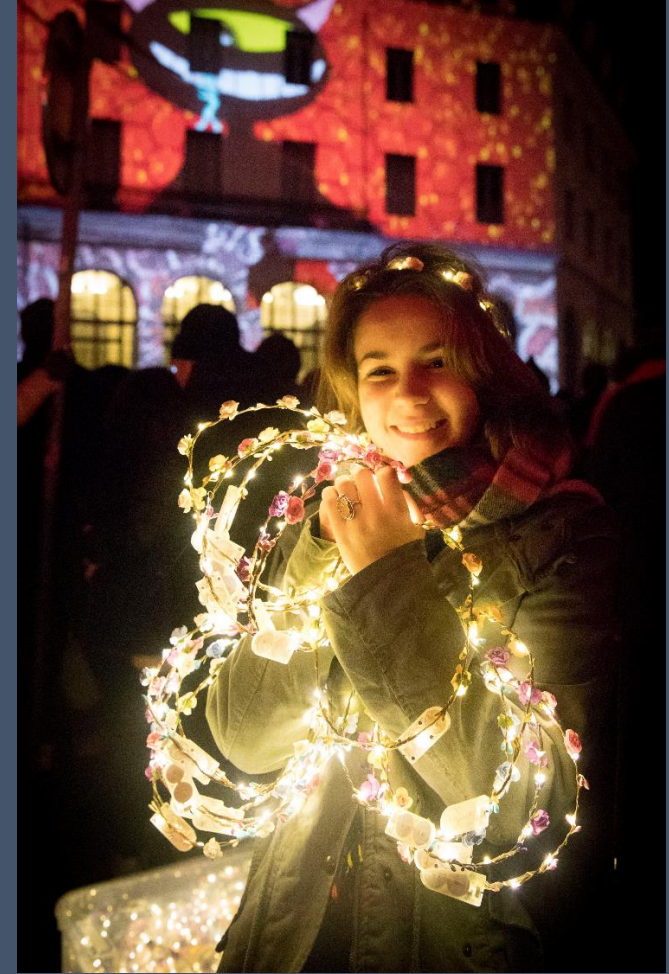
Fête des Lumières, Lyon



Fête des Lumières, Lyon



Fête des Lumières, Lyon



...Light Festivals: Initial considerations

- Is the festival an attractor for the city to enliven a particular district? Is it for the arts community or beyond? Which model is best: Community/grassroots, Professional arts, Focus on technological, media, interactive, City identity, Traditional Arts
- Who are best partners, what events will they associate? For more attention and involvement is an award program useful?
- Set goals in terms of artist participation, technologies, audience
- Integrate methodologies and practical needs: curatorial, competition, Staff/labor needs: theater electricians, event management, city requirements (permits) just to name a few

NIGHTSEEING™

Leni@nightseeing.net

@Leni_light

nightseeing.net

lenischwendinger.com

nighttimedesign.org