

A photograph of the Houston skyline in the background, with several tall skyscrapers. In the foreground, there is a flooded area with murky brown water. A concrete wall and a metal fence are visible on the left side of the frame. A highway overpass is visible in the middle ground. The sky is overcast and grey.

DISASTER RESILIENCY AND THE ARTS IN HOUSTON

 houstonartsalliance

The image features a white rectangular banner at the top with the Houston Arts Alliance logo. The logo consists of a teal circle with the lowercase letters 'haa' inside, followed by the words 'houstonartsalliance' in a grey, lowercase, sans-serif font. The background is a clear blue sky filled with a large, colorful sculpture made of numerous flat, geometric shapes in various colors (red, orange, yellow, green, blue, purple) attached to a network of grey metal poles. Some of the shapes resemble stylized wings or sails. In the lower right, there are some circular light fixtures mounted on the poles.

haa houstonartsalliance



ARTS AND CULTURE IN A DISASTER

haa houstonartsalliance



Prevention

- | | | |
|---|---|---|
| 1. Planning | 3. Intelligence and Information Sharing | 5. Screening, Search, and Detection |
| 1. Public Information and Warning | | 6. Forensics and Attribution |
| 2. Operational Coordination | 4. Interdiction and Disruption | |

Protection

- | | | |
|---|---|--|
| 1. Planning | 5. Interdiction and Disruption | 9. Physical Protective Measures |
| 2. Public Information and Warning | 6. Screening, Search, and Detection | 10. Risk Management for Protection Programs and Activities |
| 3. Operational Coordination | 7. Access Control and Identity Verification | 11. Supply Chain Integrity and Security |
| 4. Intelligence and Information Sharing | 8. Cybersecurity | |

Mitigation

- | | | |
|---|--|---|
| 1. Planning | 4. Community Resilience | 7. Threats and Hazards Identification |
| 2. Public Information and Warning | 5. Long-Term Vulnerability Reduction | |
| 3. Operational Coordination | 6. Risk and Disaster Resilience Assessment | |

Response

- | | | |
|---|--|---|
| 1. Planning | 7. Fatality Management Services | 12. On-Scene Security, Protection, and Law Enforcement |
| 2. Public Information and Warning | 8. Fire Management and Suppression | 13. Operational Communications |
| 3. Operational Coordination | 9. Logistics and Supply Chain Management | 14. Public Health, Healthcare, and Emergency Medical Services |
| 4. Infrastructure Systems | 10. Mass Care Services | 15. Situational Assessment |
| 5. Critical Transportation | 11. Mass Search and Rescue Operations | |
| 6. Environmental Response/Health and Safety | | |

Recovery

- | | | |
|---|---|---|
| 1. Planning | 4. Infrastructure Systems | 7. Housing |
| 2. Public Information and Warning | 5. Economic Recovery | 8. Natural and Cultural Resources |
| 3. Operational Coordination | 6. Health and Social Services | |



FEMA

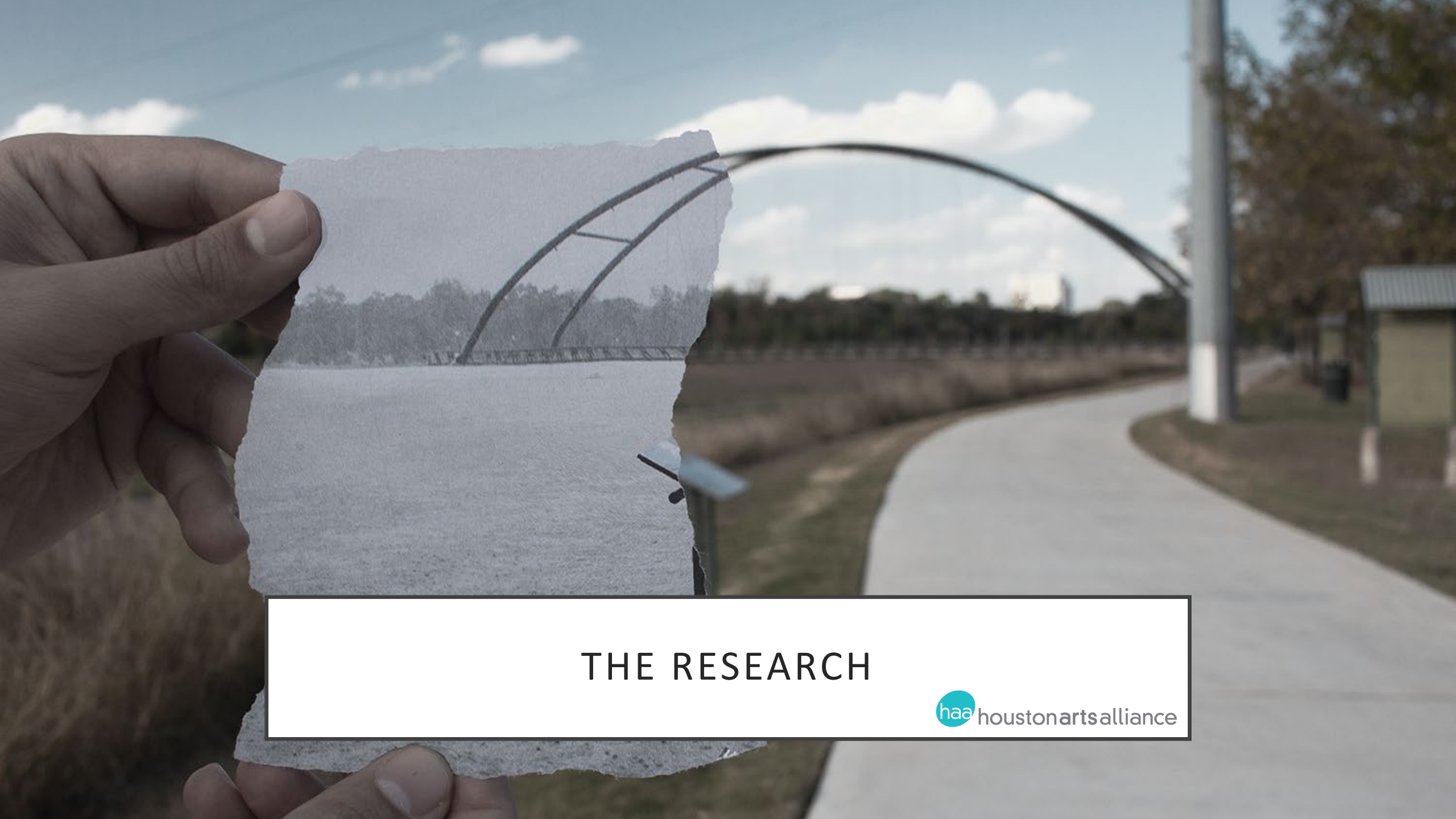
To provide feedback on the Core Capability Development Sheets, please email us at FEMA-TARequest@fema.dhs.gov.

Updated: 02/03/21

“It can be difficult to argue that cultural resources should be a priority when loss of life and lack of basic needs (water, food, and shelter) are justifiably at the forefront of a government response effort....Yet a recurring lesson from Puerto Rico is that the arts and museum communities can provide refuge and mutual support for recovery. These communities mobilize to help themselves. They have the will and some resources, but they could be made more effective by being better integrated into formal response frameworks.”

—Cultural and Historical Resources Recovery Planning in Puerto Rico; Natural and Cultural Resources Sector Report, Volume II; Homeland Security Operational Analysis Center; Rand Corporation





THE RESEARCH



THE FINDINGS

1. CREATE A VOAD





2. CREATE A STAKEHOLDER BOARD

3. ESTABLISH A LIAISON





4. DEVELOP A MUTUAL AID NETWORK

5. MEET EMERGENCY MANAGERS WHERE THEY ARE





6. INITIATE IMMEDIATE RECOVERY

7. ESTABLISH PARTNERSHIPS WITH MENTAL HEALTH PROGRAMS





8. ADVOCATE FOR CROSS-FUNCTIONAL FUNDING

9. CREATE A CULTURAL INVENTORY



Organizations

non-profit organizations, cultural heritage groups, arts collectives.

Performance Venues

Music venues, theaters, comedy clubs, amphitheaters.

Galleries/Museums

Fine art galleries, history museums, exhibition spaces.

Businesses

Service providers, supply stores, print shops, restaurants, bookstores, recording studios.

School/ Education

Arts education and training, dance academies and studios, schools

Events/ Festivals

Regularly recurring festivals, parades, gatherings, or events

Artist Studios, Workshops

Individual artist's workspace, studio complexes, light industrial creative workspace

Landmarks/ Public Space

Historic sites, parks and public cultural facilities, public art, murals, landmark buildings



QUESTIONS?

LET'S WORK TOGETHER TO MAKE A MORE
RESILIENT ARTISTIC COMMUNITY

Lauren Hainley | Director, Disaster Services

Houston Arts Alliance | 5280 Caroline, Suite 100 | Houston, TX 77004

o 713.581.6133 | c 281.468.0059 | e lauren@haatx.com

www.houstonartsalliance.com | calendar.haatx.com | ready.haatx.com