

**NATIONAL
ENDOWMENT** for the **ARTS**

 [arts.gov](https://www.arts.gov)

ARP Structure

GOAL #1: Distribute relief as quickly as possible to the field

GOAL #2: Expand access to funds for underserved communities

American Rescue Plan \$135M

*40% (~\$52M)
April 29*

**State and
Regional Arts
Agencies**

subgrantee

subgrantee

subgrantee

*60% (~\$80M)
June 23*

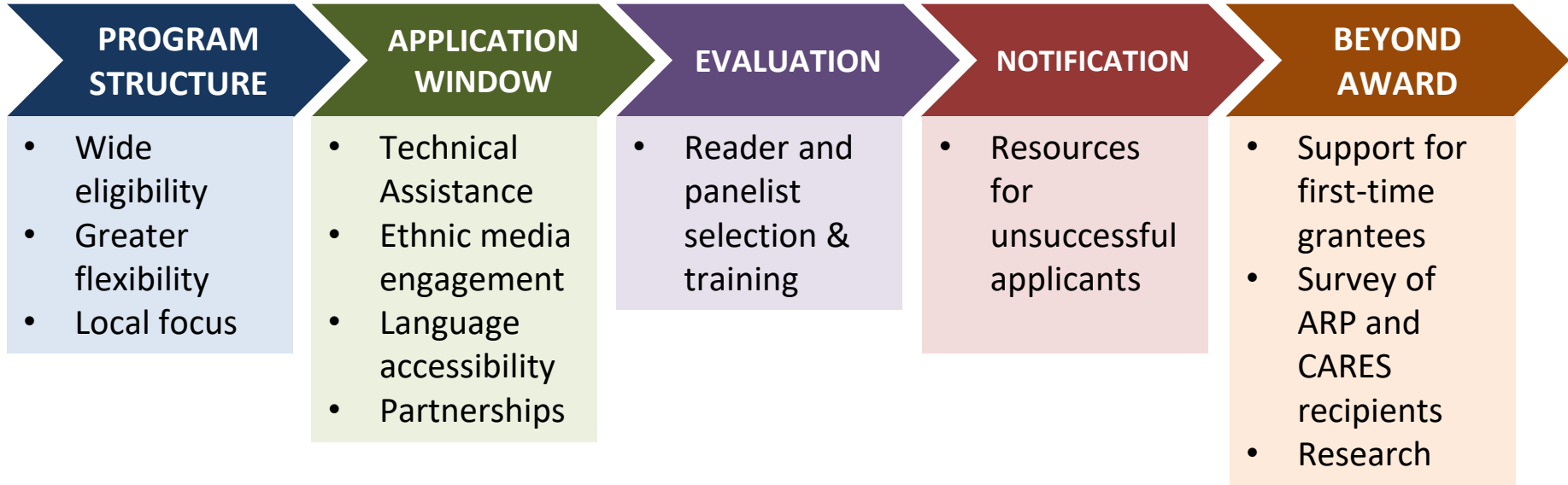
**Local Arts
Agencies
(\$20M)**

subgrantee


subgrantee

**Arts
organizations
(\$60M)**

Equity at each phase of funding lifecycle



What it could mean for applicants

	ELIGIBILITY	Nonprofits new to NEA funding should apply!
	FLEXIBILITY	Practical relief funding, including non-matching, general operating support and a range of award sizes
	ACCESSIBILITY	LEP- and deaf-led organizations can apply more easily, with materials in Spanish, Chinese, and ASL
	LOCAL FOCUS	Local arts agencies lead the way on issues of equity and inclusion and have strong ties to their communities – look for opportunities with Local, State, and Regional Arts Orgs
	TECHNICAL ASSISTANCE	Live Q&As, workshops, tutorial videos, FAQs, website updates, and more

Application dates

Local Arts Agencies

Step 1: July 22

Step 2: July 27-Aug 2

Direct grants to organizations

Step 1: Aug 12

Step 2 A-L: Aug 19-25

Step 2 M-Z: Aug 27-Sep 2



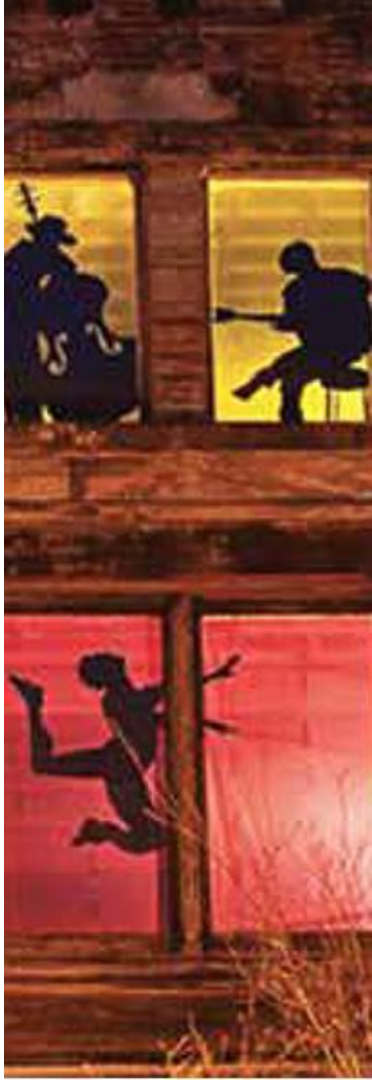
Live Q&A sessions

Monday, June 28th	1pm ET
Thursday, July 1st	11am ET
Wednesday, July 7th	3:30pm ET
Friday, July 9th	12pm ET
Tuesday, July 13th	4pm ET
Thursday, July 15th	11am ET
Monday, July 19th	4pm ET
Friday, July 23rd	12pm ET
Wednesday, July 28th	11am ET
Friday, July 30th	1pm ET
Tuesday, August 3rd	11am ET
Thursday, August 5th	3pm ET
Monday, August 9th	4pm ET
Wednesday, August 11th	12pm ET

(the following focused on Step 2)

Tuesday, August 17th	1pm ET
Friday, August 20th	12pm ET
Tuesday, August 24th	3pm ET
Thursday, August 26th	2pm ET
Monday, August 30th	4pm ET
Wednesday, September 1st	1pmET

**All sessions listed at
arts.gov/ARP-grants**



American Rescue Plan

Local Arts Agencies = options

Grants to Local Arts Agencies for Subgranting
Application Deadline: July 22, 2021

Explanation of Subgranting, Eligibility, and Awards



Subgranting Federal Funds

Recognizes the relationship
between federal and local
government


Amplifies the reach of federal
dollars



Definition of Subgranting

Pass-through Entity

Independent subgrantee activities

An illustration on the left side of the slide shows two stylized figures. One figure, with dark skin and wearing a yellow shirt, is seated and playing a black upright piano. The other figure, with light skin, a white mustache, and wearing a black cap and a light green shirt, stands behind the piano, looking towards the player. The background of the illustration is a solid orange-red color.

Eligibility: General

Federal tax-exempt status

Three-year history of arts programming

Current on required grant reporting

**Reminder: always check specific program guidelines*



Eligibility: Additional for Subgranting

Designation status from local government

History of grantmaking

**Reminder: always check specific program guidelines*

Designation Status

Designated Local Arts Agencies

Documentation from local government required

Plan in advance to obtain designation

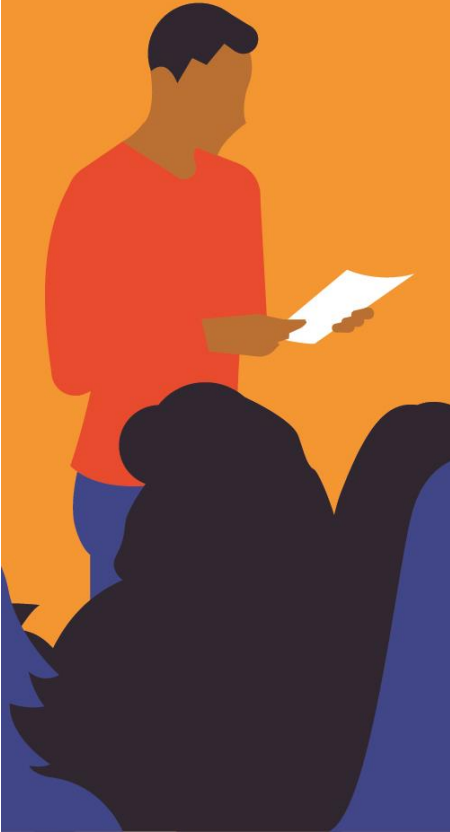


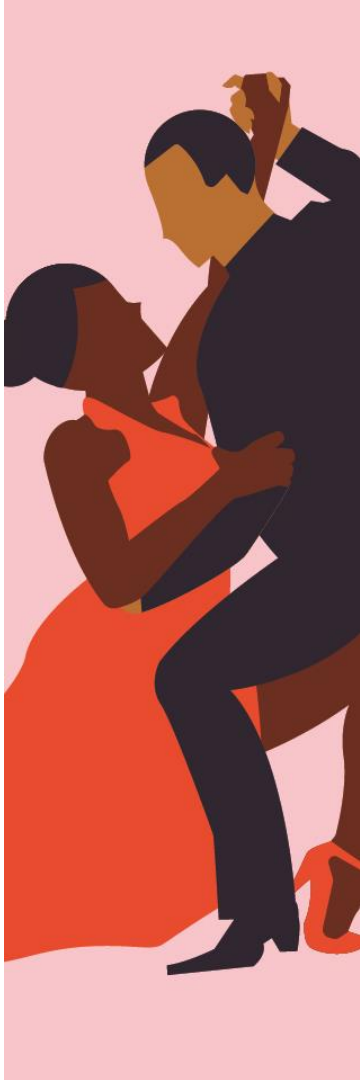
Documentation for Designation

Authority to operate on local government's behalf

Ordinance, resolution, charter, or contract

- Valid and current at time of application.
- Documentation from one local government for multi-city or multi-county service area
- Local government = city or county





Grantmaking History

Application content reflects grantmaking:

- Grantmaking History
- Selection Process
- Applicant Pool
- Grantees Served



Program Specifics

\$150,000 / \$250,000 / \$500,000

- Selecting the Requested Amount
- Allowable Costs
- Operating Support
- No Cost Share/Match Required

Compliance and Reporting

Subgranting Terms and Conditions

- Subgrantee Eligibility
- Compliance Requirements
- Necessary Reporting





Q&A

Thank You!